

★ Specifications

Descriptions	Storage Water Heaters									
	Models	Vertical			Horizontal					
		BSH-30V	BSH-40V	BSH-60V	BSH-20H	BSH-30H	BSH-40H	BSH-60H	BSH-80H	BSH-100H
Capacity in Letter & Size	Capacity	30 Litres	40 Litres	60 Litres	20 Litres	30 Litres	40 Litres	60 Litres	80 Litres	100 Litres
	Dimension (mm)	A	340	340	410	340	340	340	410	410
		B	625	775	760	488	625	775	760	920
Approx. Weight	Empty	9.5 kg	12.5 kg	13 kg	7 kg	9.5 kg	12.5 kg	13 kg	16 kg	20 kg
	Full	39.5 kg	52.5 kg	73 kg	27 kg	39.5 kg	52.5 kg	73 kg	96 kg	120 kg
Water Temperature Control	Thermostatically Controlled at 70°C Secondary Safety Cut-Out at 90°C									
Heater Electrical Rating	3kW 240Vac 12.5ampx, 3kW 230Vac 13amps, 1.5kW 230Vac 6.6amps									
Thermal Cut-Off	Normal: Cut-Out at Approx. 70°C & Cut-In at Approx. 63°C / Overload: Cut-Out at Approx.90°C									
Cylinder Insulation	USA CFC-Free Polyurethane Foam Insulation									
Working Pressure	Min: 0.12 bars (1.8p.s.i.) / Max: 6.5 bars (98p.s.i.)									
Test Pressure	13.0 bars (195 p.s.i.)									
Water Connection	15mm Diameter (1/2" BSP)									

* Specifications are subject to change without prior notice for further improvement.
 * The specification is given by the manufacturer.

what's hot?
 ...turn to find out

Useful Information

Litres	Multiple Connection	No. of people	RECOMMENDED FOR		
			Shower	Long Bath	Jacuzzi
20	1	1	✓	✗	✗
30	1	1	✓	✗	✗
40	1	1-2	✓	✓	✗
60	1	1-2	✓	✓	✗
80	2	2-3	✓	✓	✓
100	2	2-4	✓	✓	✓

Authorised Dealer

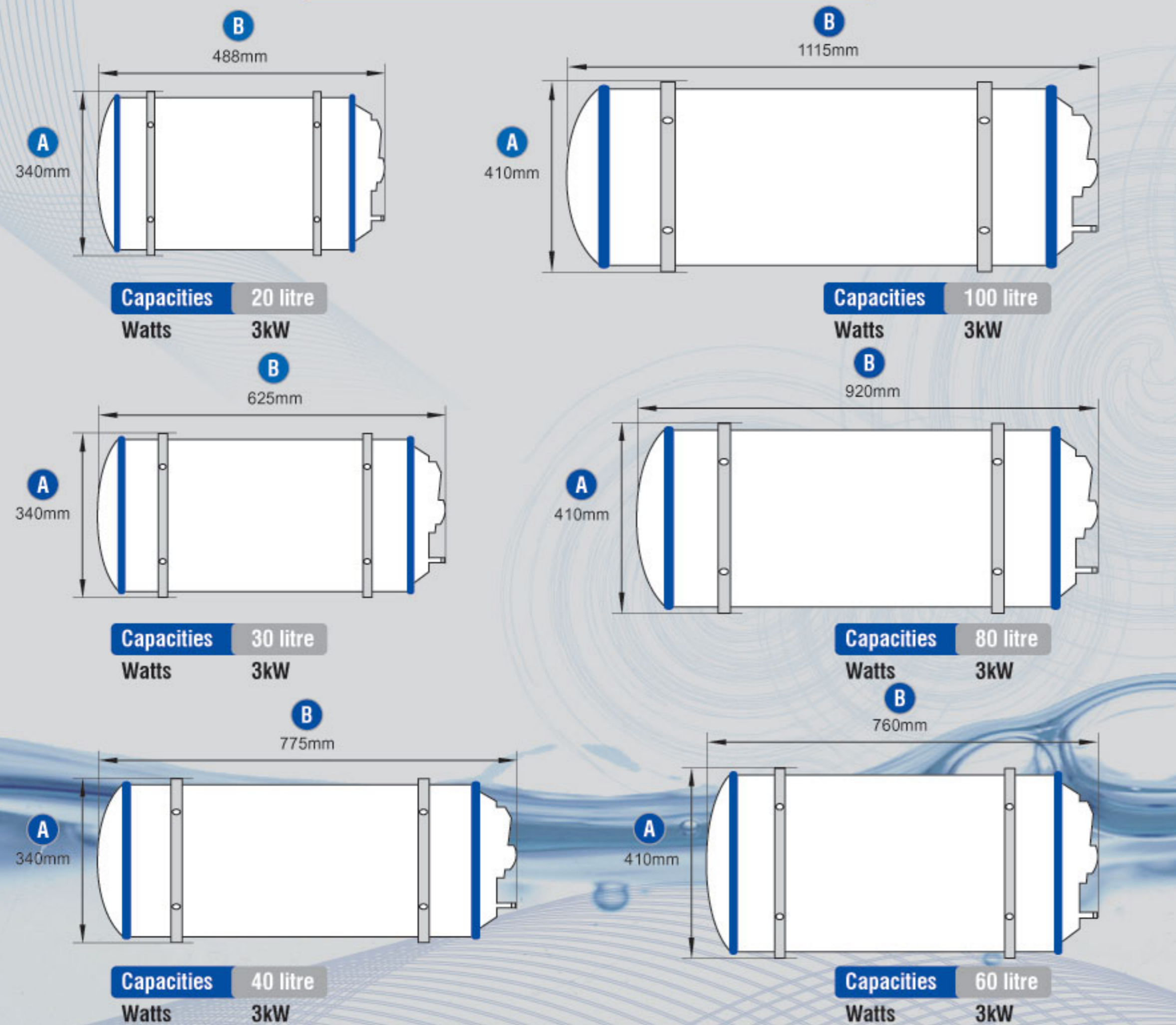
Introducing the
LORESTO
Series
Electric Storage



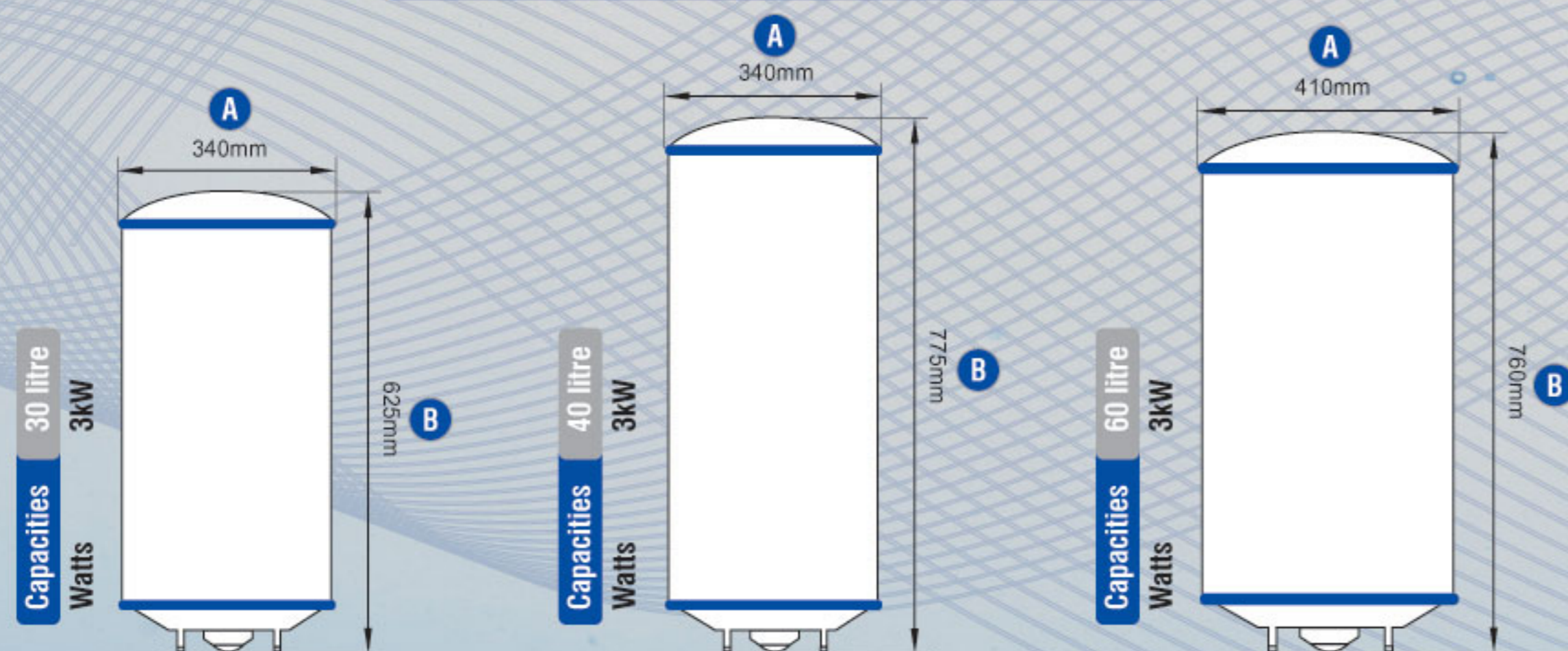
Water Heater



Measurement of Horizontal Model



Measurement of Vertical Model



Crystal Layer Inner Tank
- 3mm crystal coated protective tank
- Resistance to corrosion
- 99.9% leakage proof
- Prolonged heat transfer
- Reduce operation cost



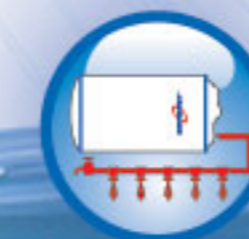
Double-Heating Element
- Longer life span and energy saving



Safety Thermostat
- Electrical cut-off device



Safety Valve with Non Return Valve
- Pressure monitoring



Single or Multiple Outlets
- Cost saving



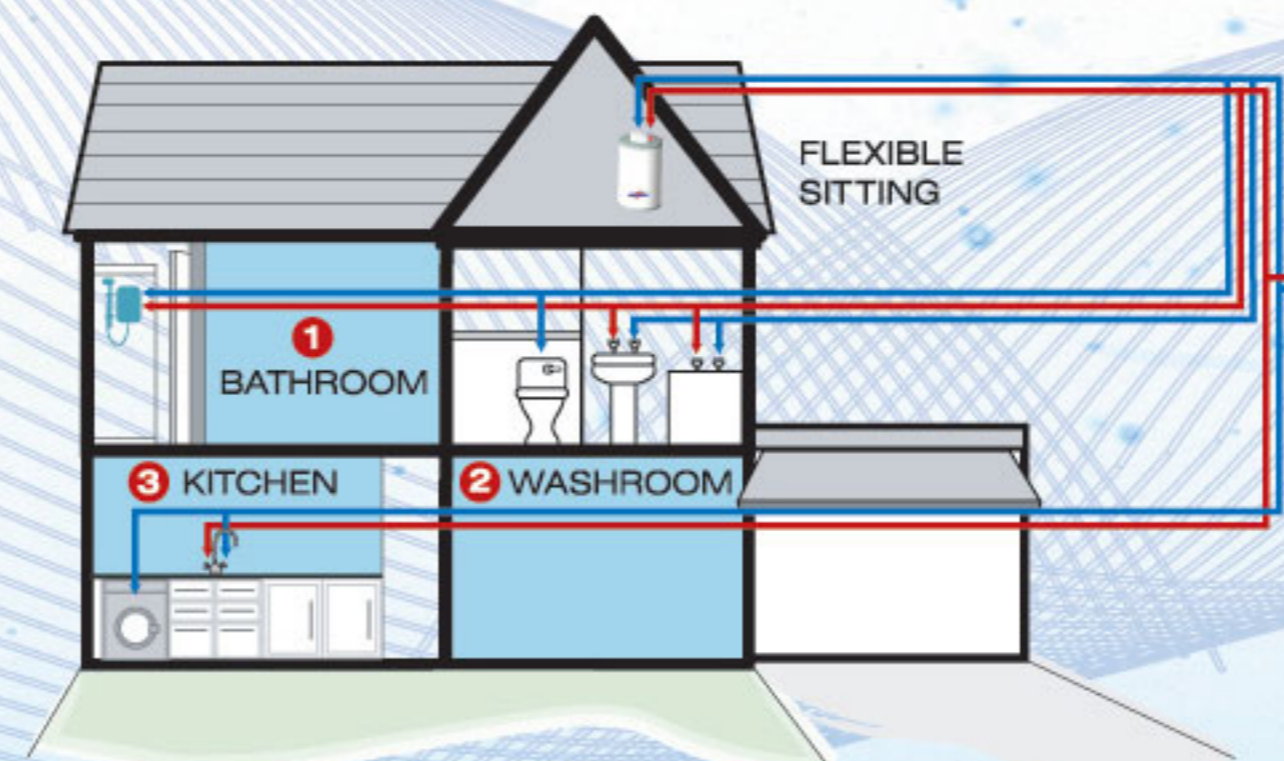
Insulation Foam
- Heat loss prevention



Flexible and Easy to Install
- Vertical or Horizontal version

Reliable Name

When it comes to storage heater tank design, none can surpass Beebest's indelible high mark of excellence. **Beebest Electric Storage Water Heater** saves space and money. It can be easily installed and concealed in the ceiling to save space. Incoming water is directed through the heater for heating. Excess warm water is stored in the crystal layer inner tank. Its centralized multipoint system provides you with hot water at every tap. So, with **Beebest Electric Storage Water Heater**, you can enjoy hot water anytime, anywhere and simply more cost saving.



Centralized Multipoint System

Now, you can enjoy hot water at every tap of your home for bath, cooking or washing. **Beebest Electric Storage Water Heater** is specially designed to supply and store your hot water with maximum efficiency and reliability.

www.beebest.com.my

Pictures are for illustration purpose only. Model outlook and specification may change without prior notice for further improvement.